

How To Import Certificates to Truststore



2019-04-13

Contents

1	Introduction	1
2	Windows	1
2.1	Chrome	1
2.2	Internet Explorer	2
2.3	Windows Certificate Store for Browser	2
2.3.1	Install Root Certificate	2
2.3.2	Install Intermediate Root Certificates	2
2.3.3	Install Personal Certificate	4
2.4	Edge	4
2.5	Microsoft Management Console	4
2.6	Firefox	18
2.6.1	Install Root and Intermediate Root Certificates	18
2.6.2	Install Personal Certificate	22
2.7	Thunderbird	22
3	Linux	22
4	Mac OS	22
5	Apple Smartphone	22
6	Google Smartphone	22

1 Introduction

As the import of certificate varies between different operating systems and applications there is a choice of the most used ways given.

2 Windows

Within Windows most application uses the Windows truststore. Some applications like Firefox and Thunderbird use their own truststore.

2.1 Chrome

To install a certificates to the Chrome Truststore go to Settings.

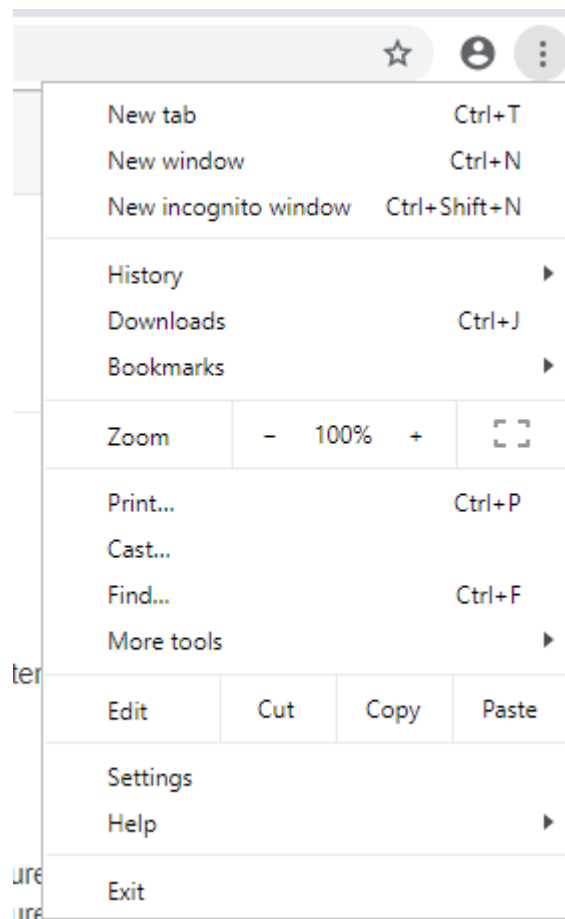


Figure 1: Screenshot Chrome Settings

On the Settings tab choose Advanced

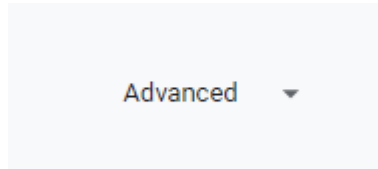


Figure 2: Screenshot Chrome Settings Advanced

Scroll down to the Privacy area.

Use Manage Certificate to enter the Windows Certificate Store for Browser.

Continued with Windows Certificate Store for Browser.

2.2 Internet Explorer

To install a certificates to the Internet Explore Truststore goto Settings - Internet Options.

In the Internet Options goto the Privacy tab.

Use Certificate to enter the Windows Certificate Store for Browser.

Continued with Windows Certificate Store for Browser.

2.3 Windows Certificate Store for Browser

2.3.1 Install Root Certificate

To install a root cartificate go to tab Trusted Root Cerification Authorities.

Use import to install a root certificate.

Start the import with Next.

Choose the root certificate file and Next.

Make sure the store Trusted Root Cerification Authorities is chosen and Next.

Use Finish to complete the import.

Check the fingerprint presented with the fingerprint of the root certificate and confirm with Yes.

At the end the import confirmation is given.

2.3.2 Install Intermediate Root Certificates

To install a intermediate root cartificate go to tab Intermediate Cerification Authorities. It is recommended not to import each intermediate certificate seperately better use the bundle.p7b file.

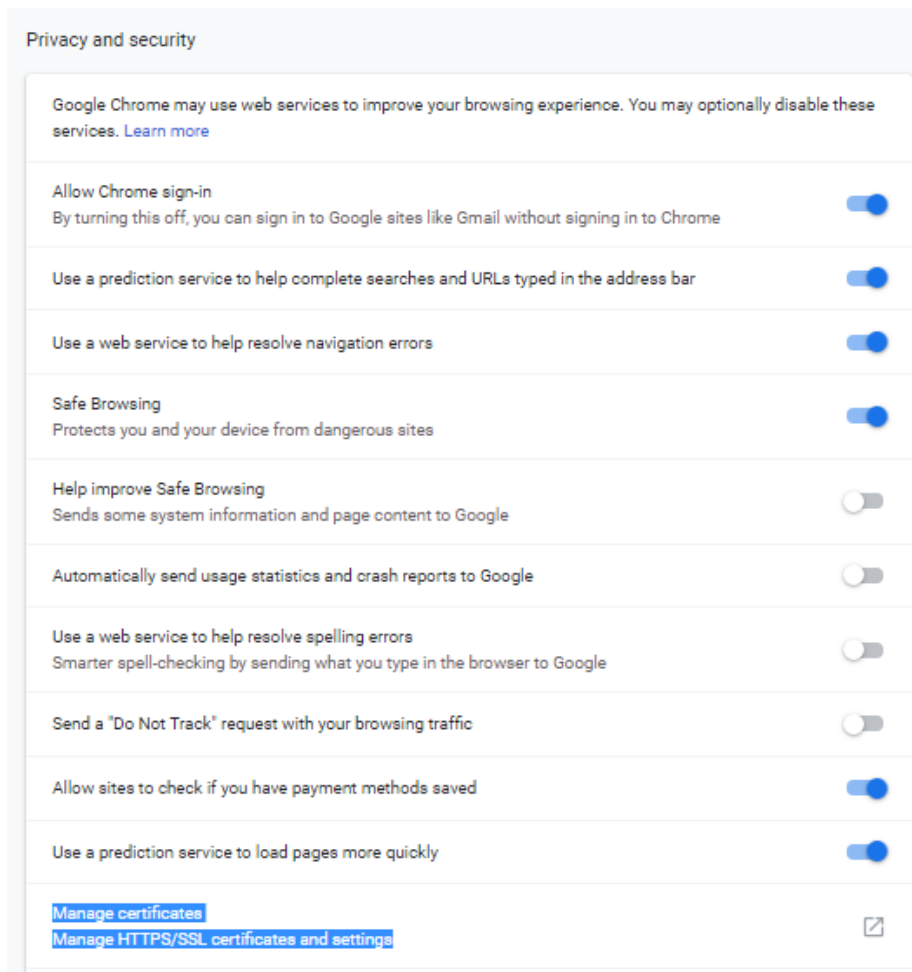


Figure 3: Screenshot Chrome Settings Privacy

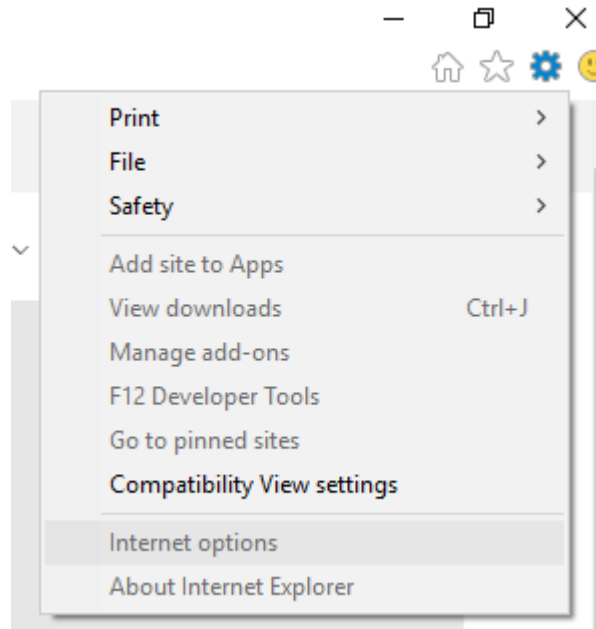


Figure 4: Screenshot Internet Explorer Settings

The import steps are similar to the ones for the root certificate import. Only the third step is different.

Make sure the store Intermediate Certification Authorities is chosen.

2.3.3 Install Personal Certificate

2.4 Edge

As there is no certificate import in Edge the certificates need to be imported either with the Internet Explorer or with the Microsoft Management Console.

2.5 Microsoft Management Console

To start the Microsoft Management Console press once the Windows key and type afterwards mmc.exe.

Select mmc.exe and allow the User Account Control to modify the data with Yes.

Use File - Add/Remove Snap-in... to open the certificate area.

On the left hand side select Certificate and Add it.

For the Root and Intermediate Root Certificates it is recommended to use the computer account. For the personal certificates of course use My user account.

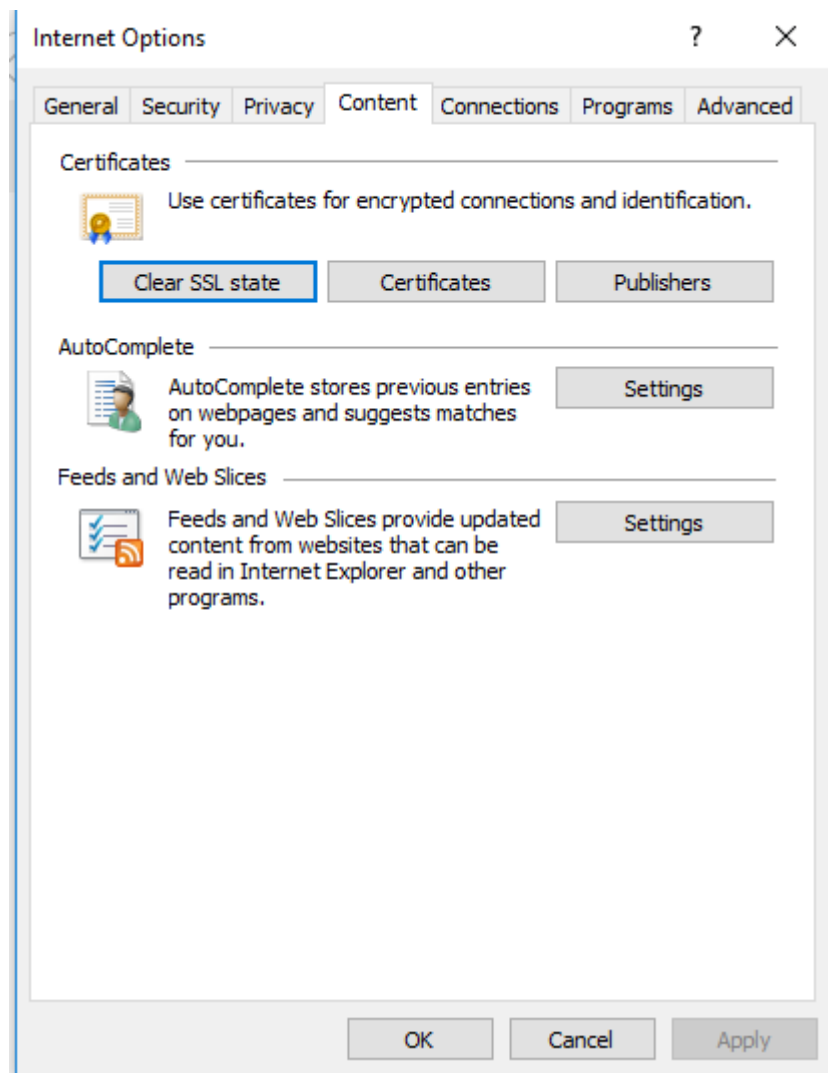


Figure 5: Screenshot Internet Explorer - Internet Options - Privacy

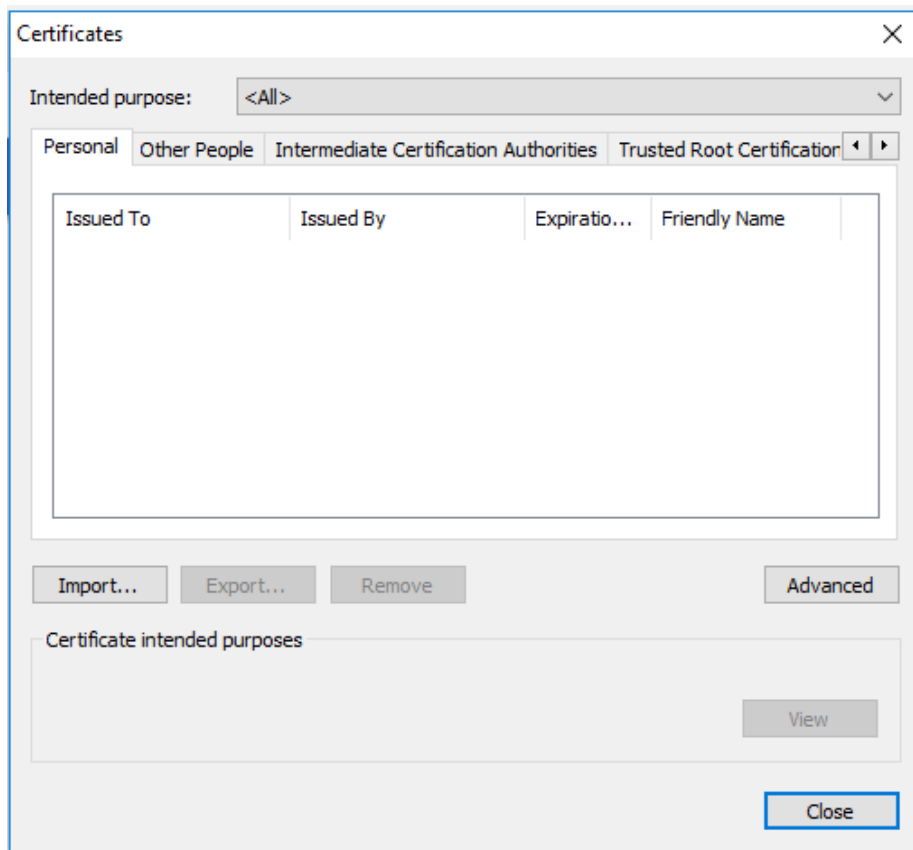


Figure 6: Screenshot Windows Certificate Store for Browser

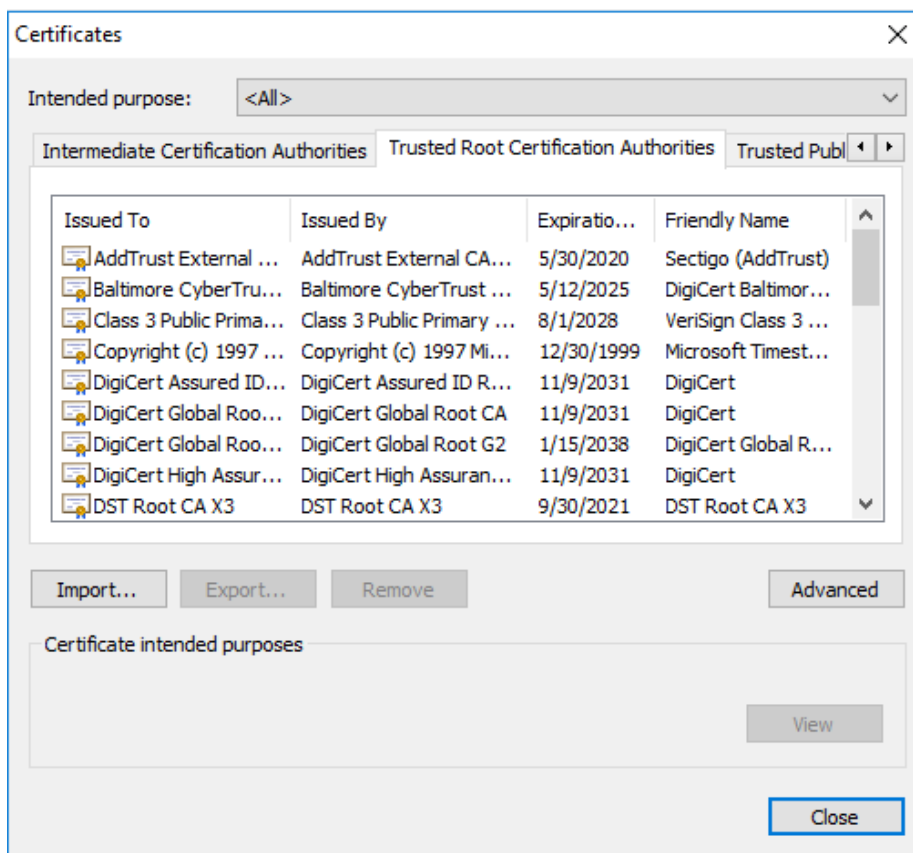


Figure 7: Screenshot Windows Certificate Store for Browser - Trusted Root Certification Authorities

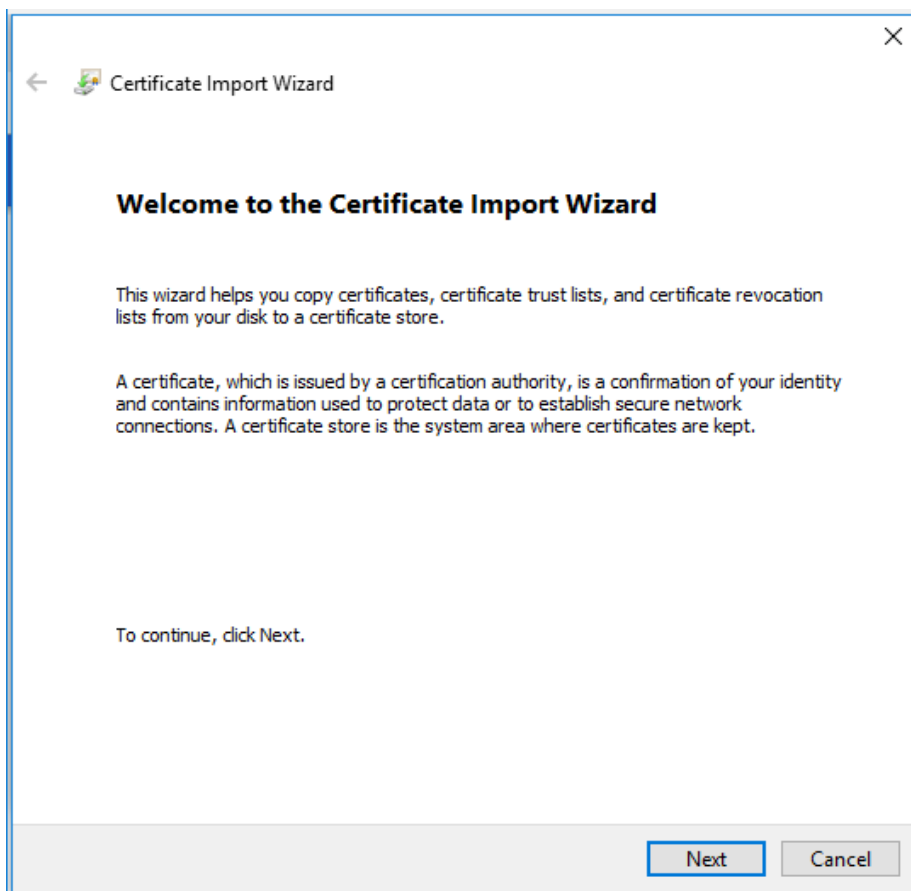


Figure 8: Screenshot Certificate Wizzard Step 1

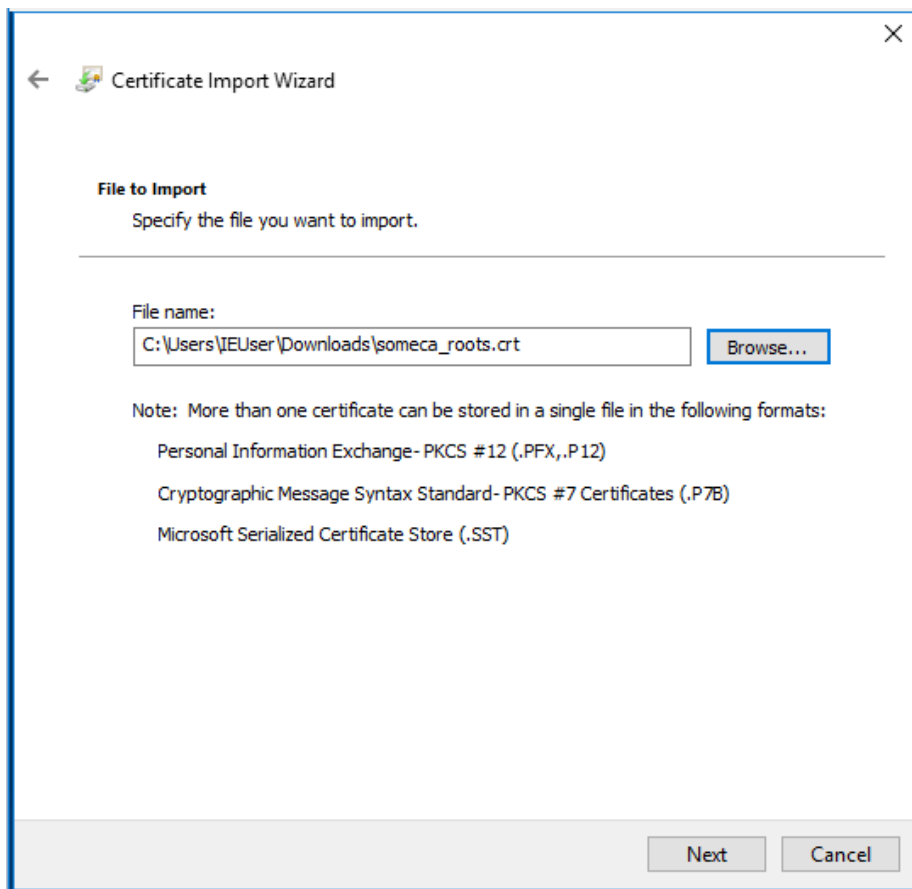


Figure 9: Screenshot Certificate Wizzard Step 2

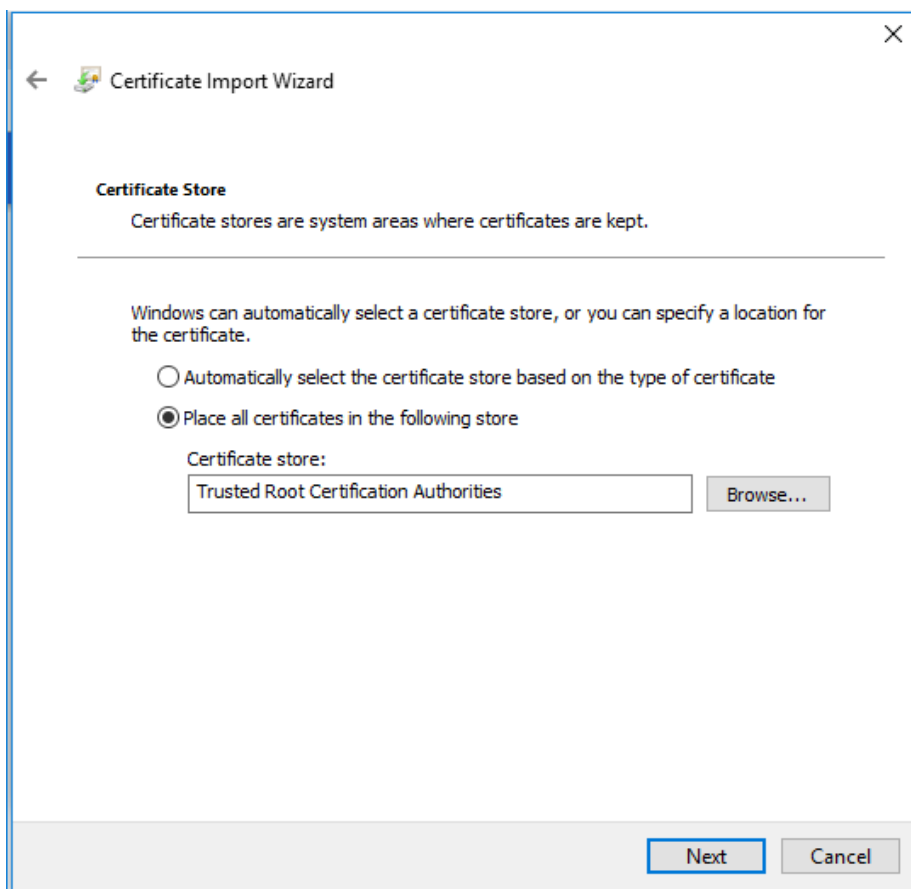


Figure 10: Screenshot Certificate Wizzard Step 3

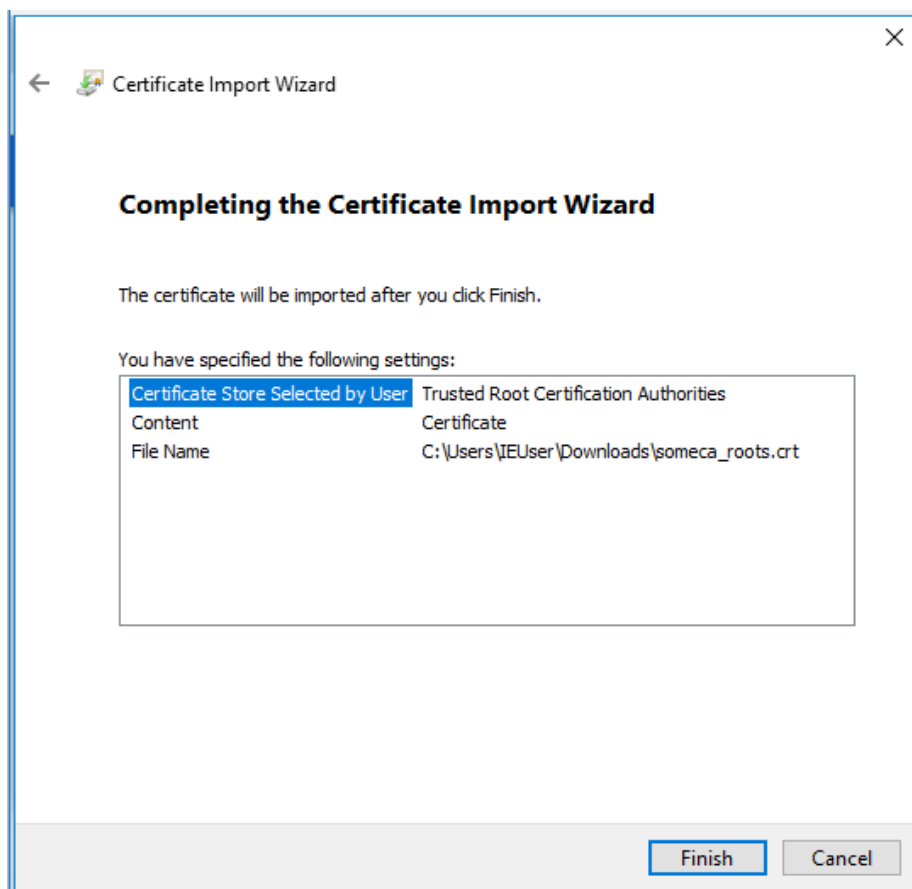


Figure 11: Screenshot Certificate Wizzard Step 4

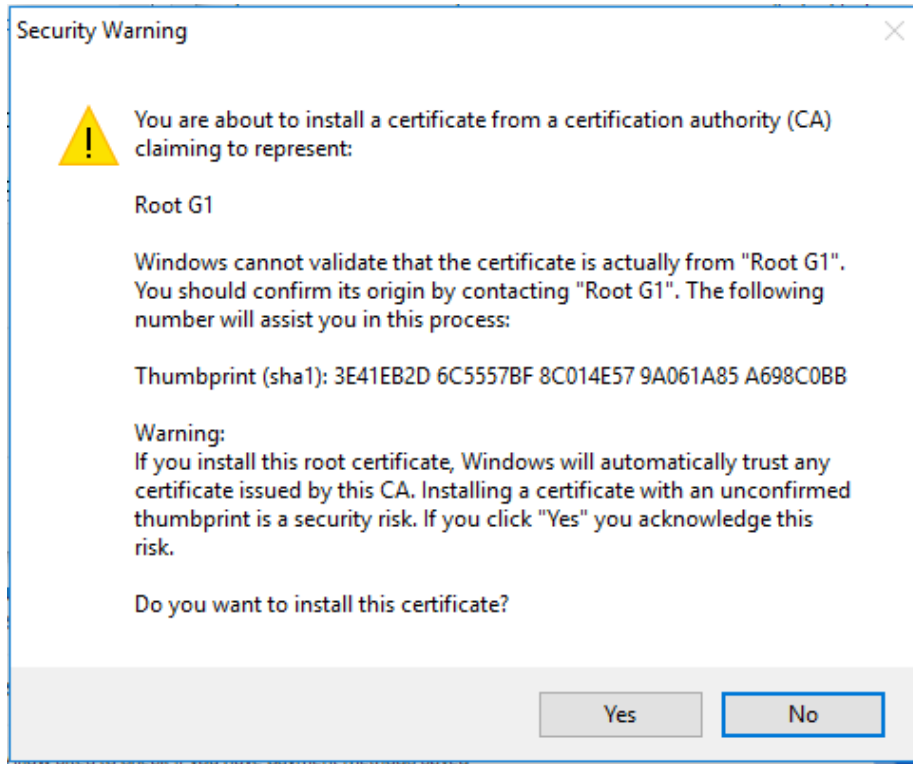


Figure 12: Screenshot Certificate Wizard Confirmation 1

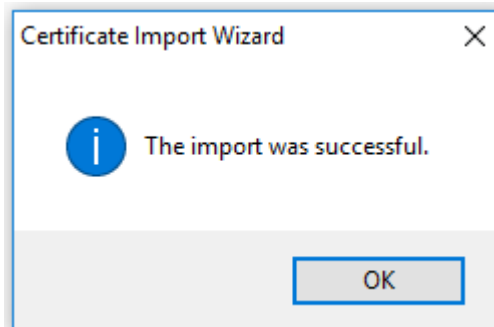


Figure 13: Screenshot Certificate Wizard Confirmation 2

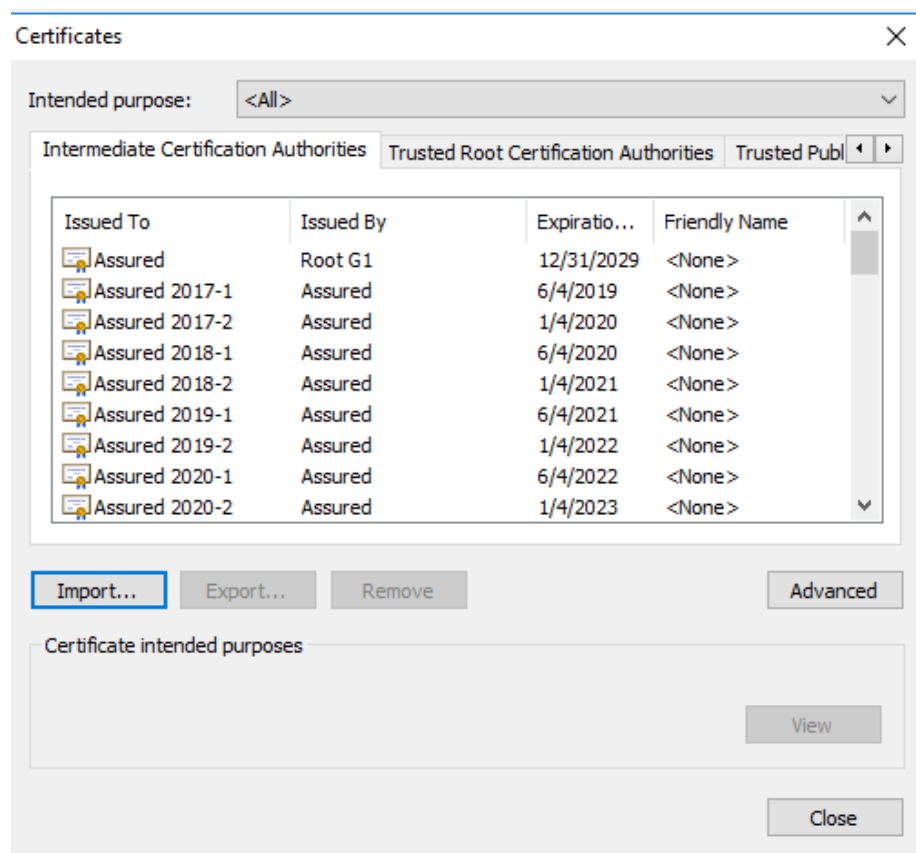


Figure 14: Screenshot Windows Certificate Store for Browser - Intermediate Certification Authorities

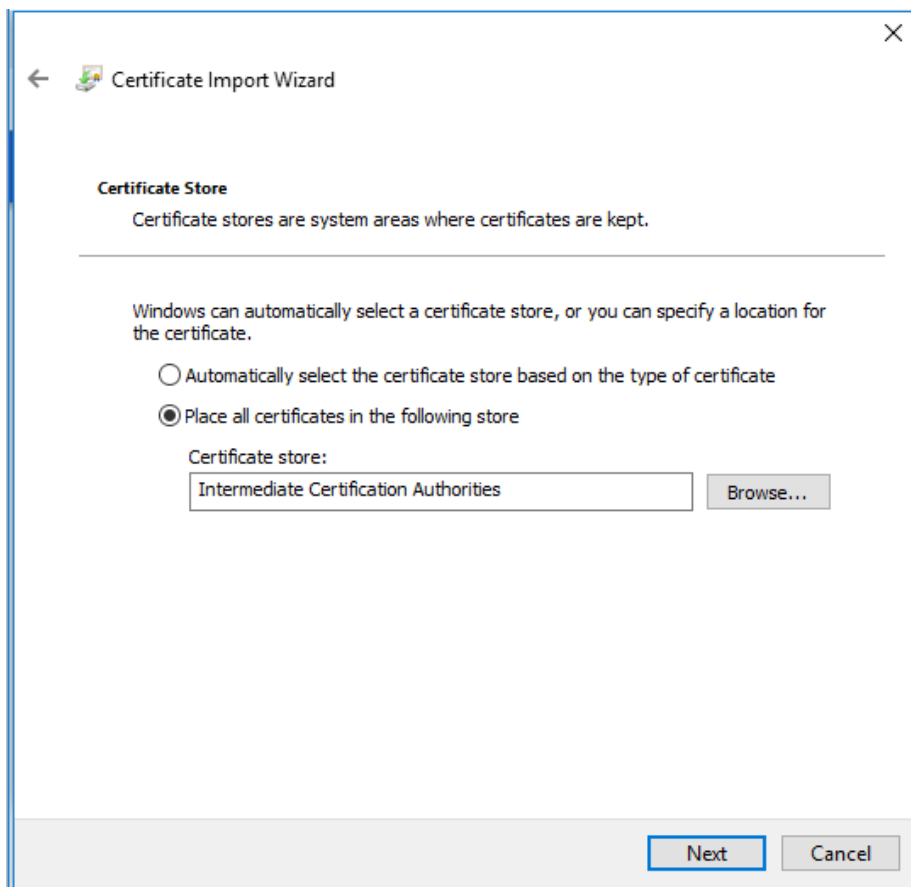


Figure 15: Screenshot Certificate Wizzard Step 3

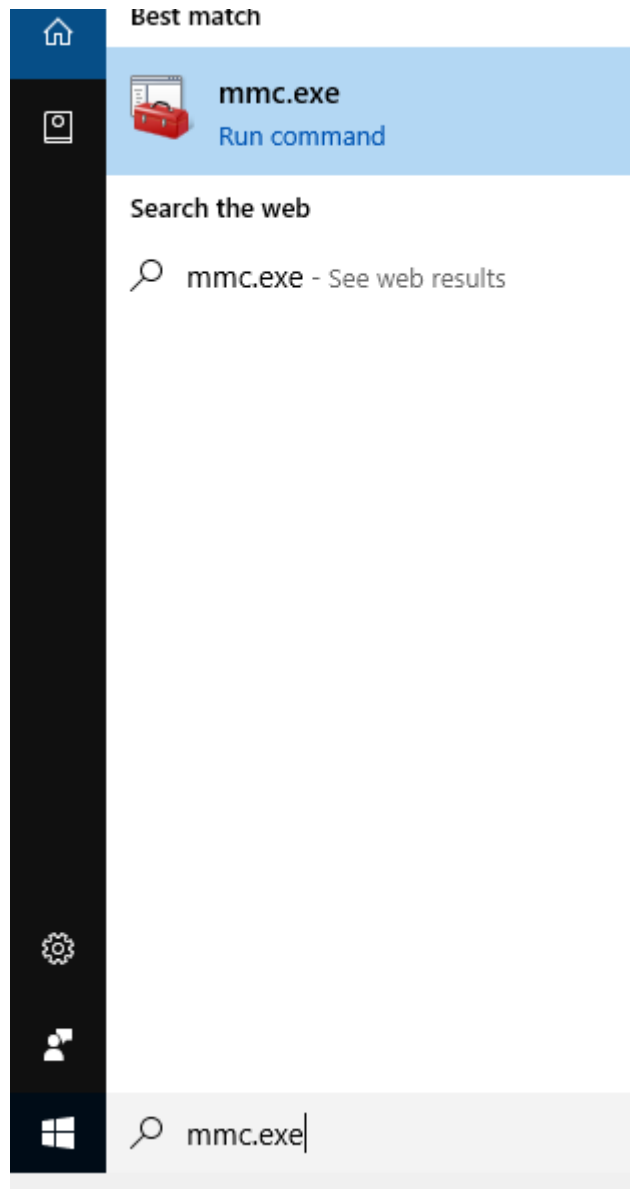


Figure 16: Screenshot Certificate Wizzard Step 3

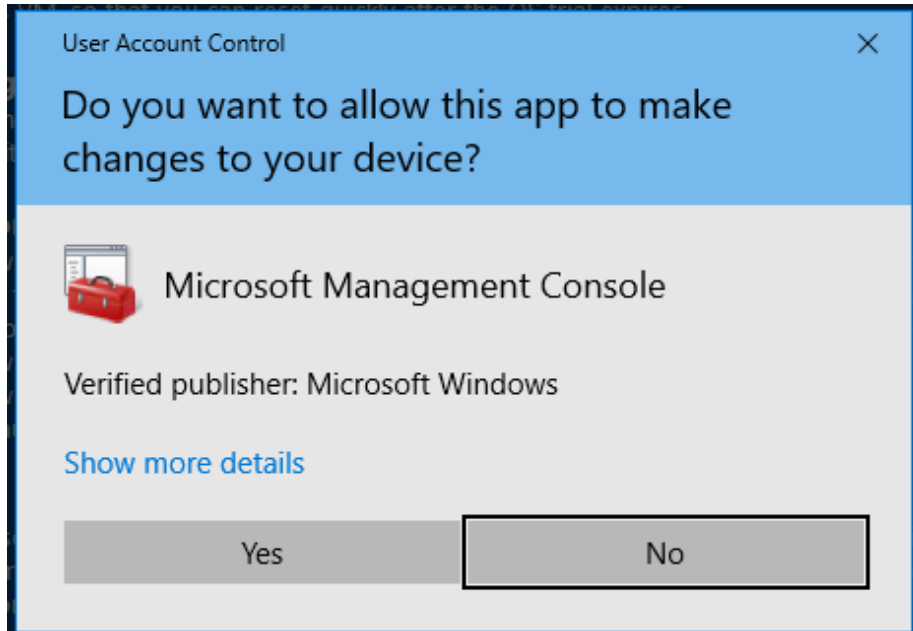


Figure 17: Screenshot Certificate Wizzard Step 3

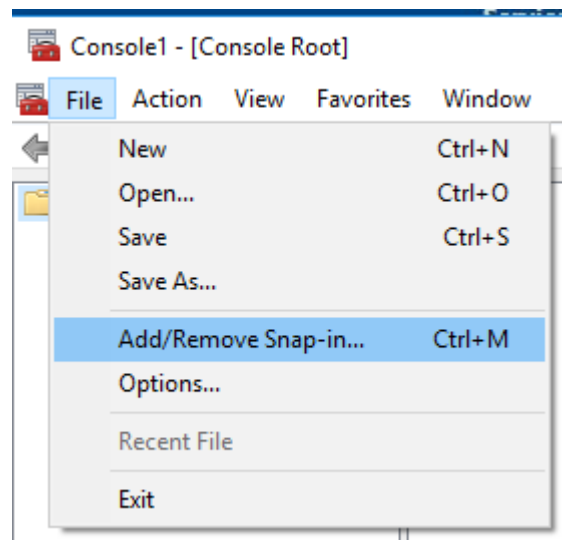


Figure 18: Screenshot Certificate Wizzard Step 3

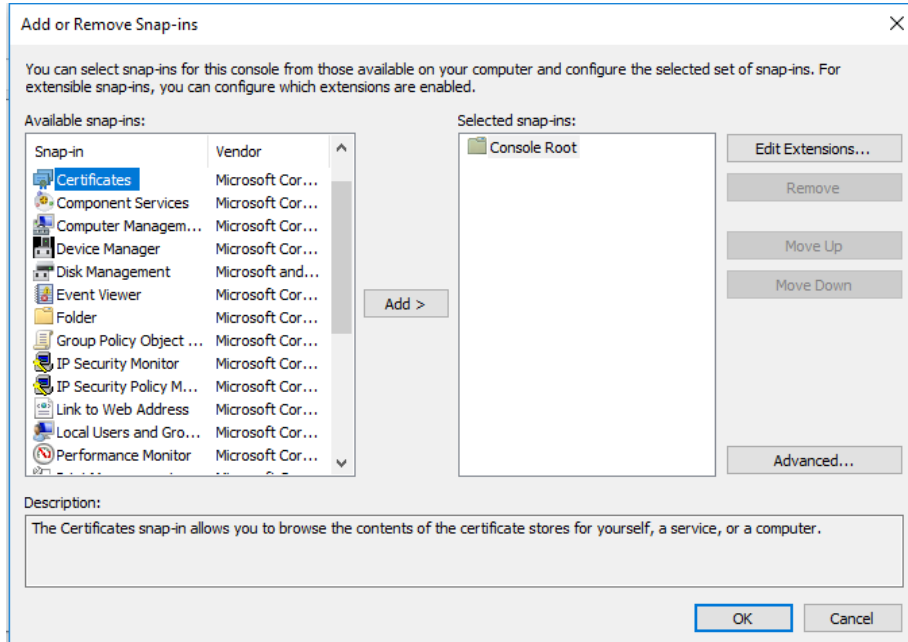


Figure 19: Screenshot Certificate Wizzard Step 3

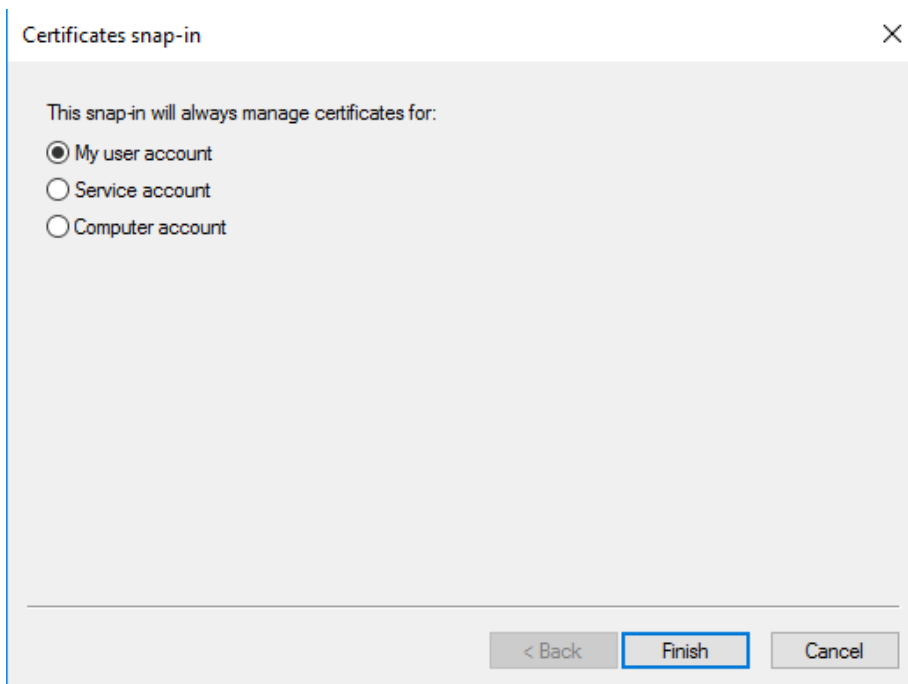


Figure 20: Screenshot Certificate Wizzard Step 3

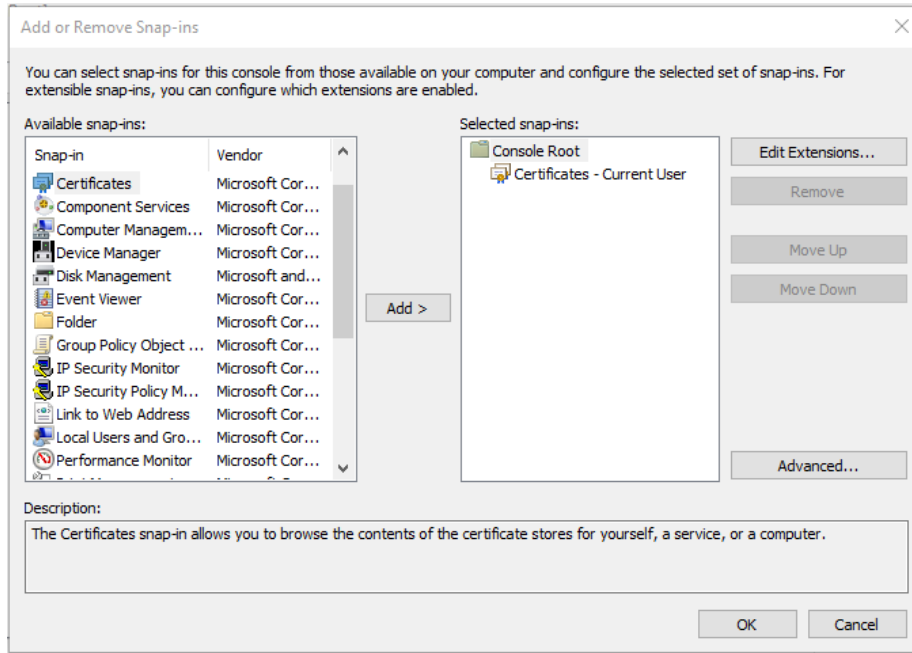


Figure 21: Screenshot Certificate Wizzard Step 3

2.6 Firefox

To install a certificates to the Firefox Truststore go to Options.

In the Options choose Privacy & Security tab.

Use View Certificates to access the Certificate Manager.

2.6.1 Install Root and Intermidiate Root Certificates

On the Authorities tab the Root and Intermediate Root Certificates are imported.

With Import the process is startet. It is recommended not to import each intermediate certificate seperately better use the bundle.p7b file.

To finish the import both checkbox should be tixked for grant trust to the imported certificate and use OK.

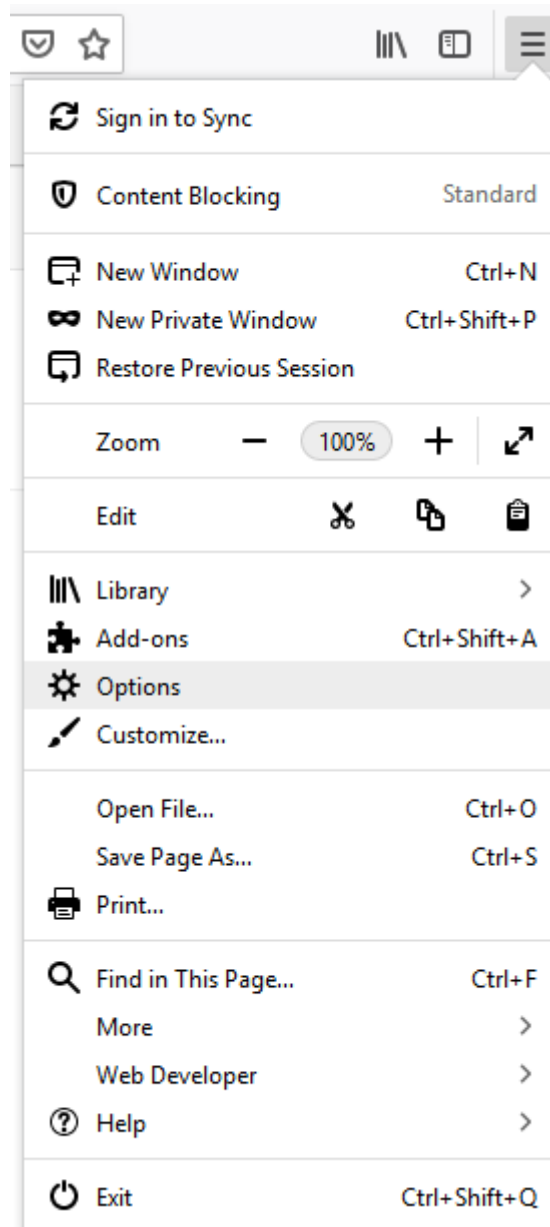


Figure 22: Screenshot FireFox Options

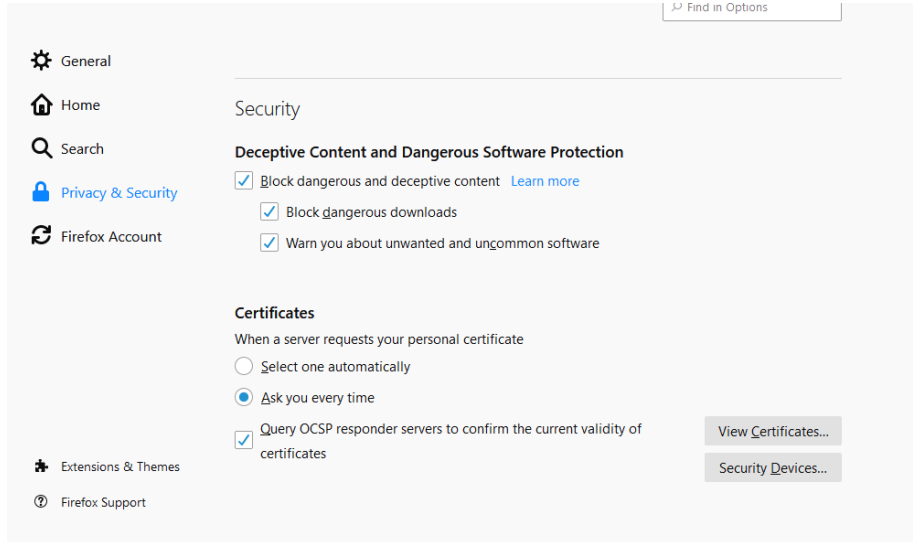


Figure 23: Screenshot FireFox Privacy & Security

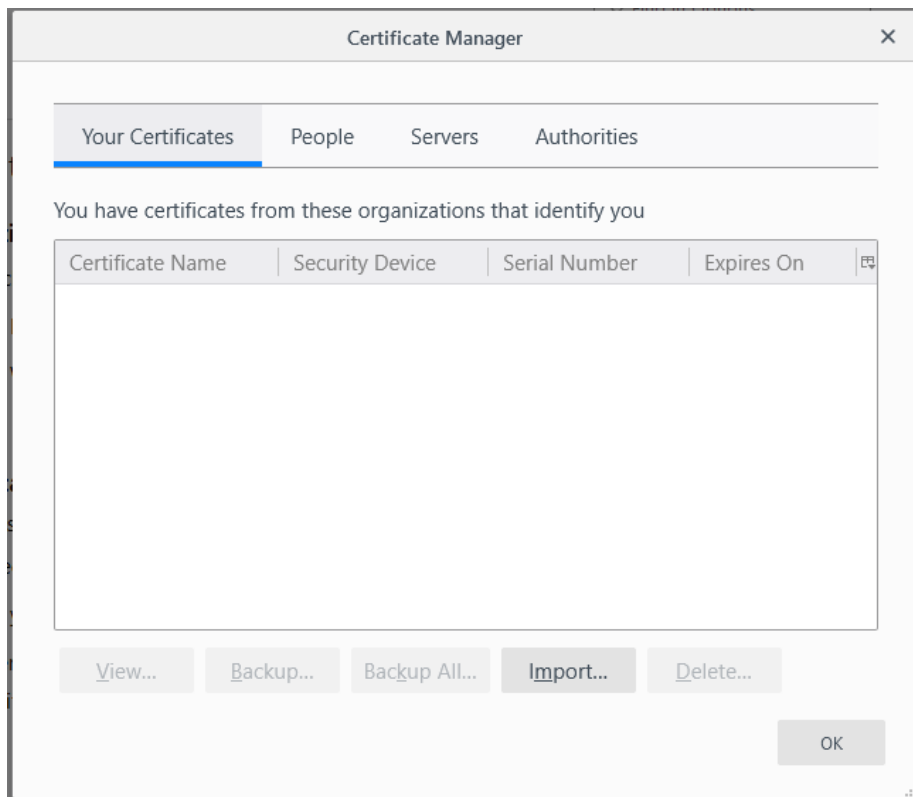


Figure 24: Screenshot FireFox Certificate Manager

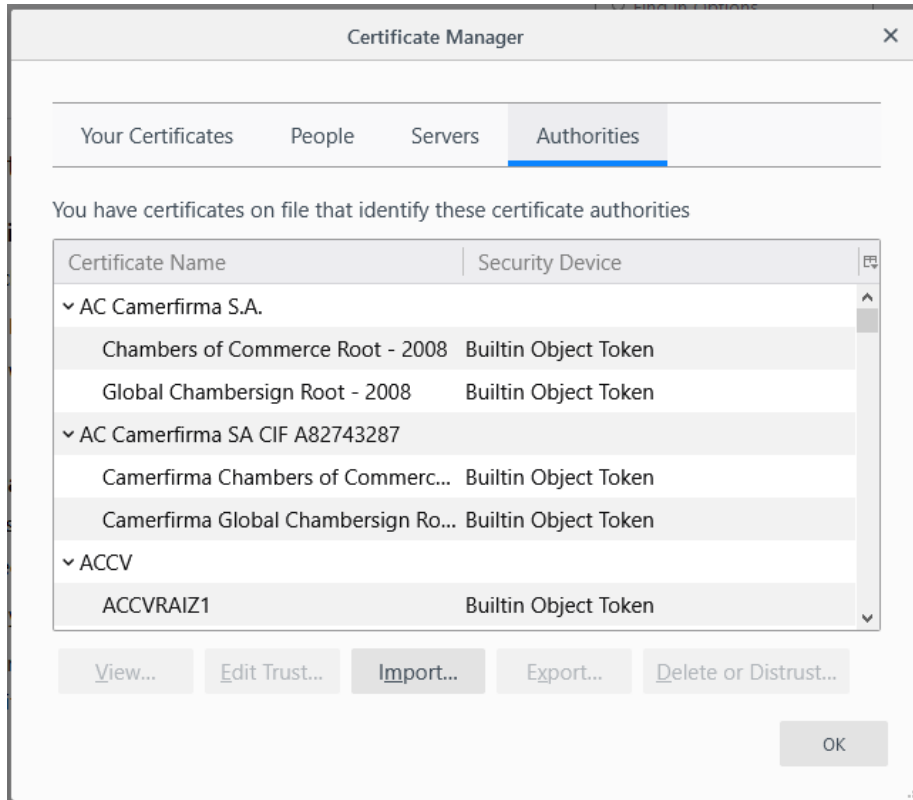


Figure 25: Screenshot Chrome Settings Privacy

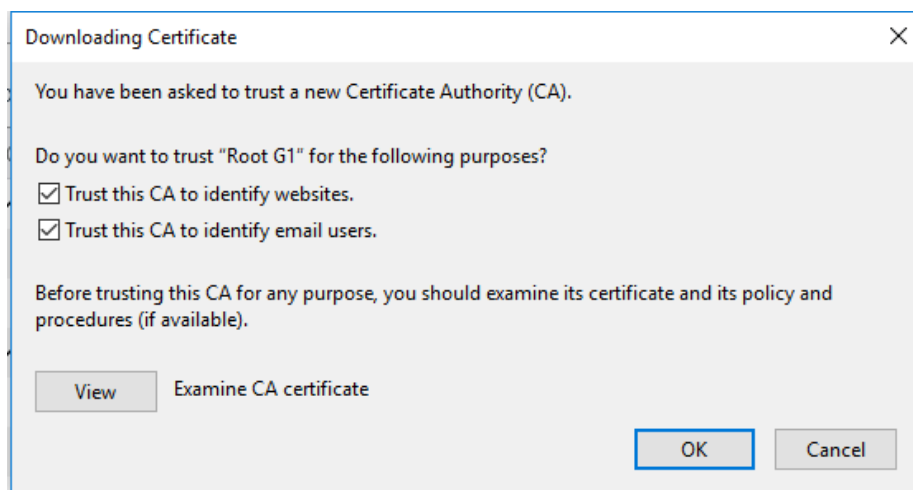


Figure 26: Screenshot Chrome Settings Privacy

2.6.2 Install Personal Certificate

2.7 Thunderbird

3 Linux

4 Mac OS

5 Apple Smartphone

6 Google Smartphone